

HDMI UTP Extender HDMI Extender

Model: PW-DT241F

USER MANUAL

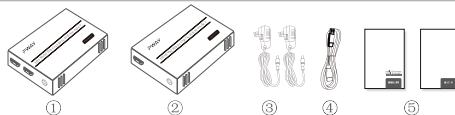
1.Description

The Fiber optic extender provides extension of HDMI signals long distances over one fiber optic cable, it supports high resolution up to 1080P. The extender can use for a wide range of applications requiring long distance transmission of high resolution with high quality by its good stability and powerful security.

2.Features

- Transmits HDMI video and audio signals up to 20KM over a Fiber optic cable;
- Support video resolution up to 1920*1080P@60Hz;
- Supports over TCP/IP protocol, One-to-many applications with switches;
- Supports Stereo Audio over IP, independent to HDMI extension Support over TCP/IP;
- Supports USB (Keyboard, Mouse) extension over IP;
- Compliance with HDMI 1.3 and HDCP 1.2 standard;
- High compatibility, can auto-match source and display device;
- Built-in automatic adjustment system, make the image smooth, clear and stable;
- Simple to install, plug and play.

3.Package list

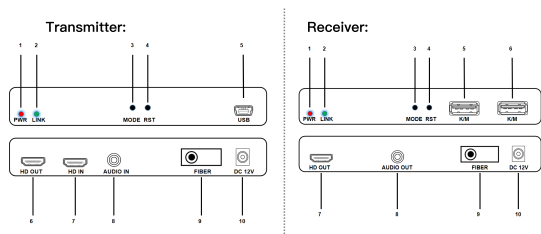


① HDMI transmitter	1 pcs
② HDMI receiver	1 pcs
③ Power adapter	2 pcs
④ USB-A to MINI-USB cable	1 pcs
⑤ User manual	1 pcs

4.Specifications

	Parameter	Description
Video	Standards	HDMI 1.3; HDCP 1.2
	Compressed format	H.264
	Maximum pixel clock	165MHz
	Maximum data rate	6.75Gbps
	Resolution	1920X1080P@60Hz
Audio	Connector	HDMI-A
	impedance	100Ω
Audio	Interface	3.5mm earphone seat
	Channel	2.0 Stereo
UTP	Interface	SC
	Transmission distance	20 KM
Other	Power supply	The power adapter: DC 12V
	Power dissipation	MAX 3.3W
	Temperature	Operating: -5 C ~ +70 C
	Humidity	Operating: 5% ~ 90%
	Dimension	119*81.7*23mm
	The warranty	1 year free warranty

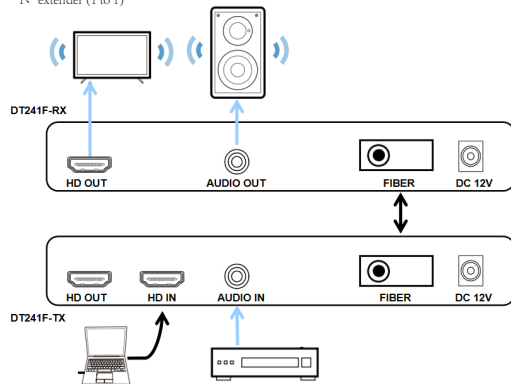
5.Panel



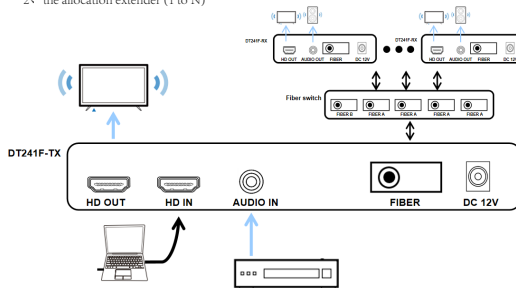
Item	Description	Item	Description
1	PWR light: Lit when the machine is powered on	1	PWR light: Lit when the machine is powered on
2	Link light: Flashes during data transfer	2	Link light: Flashes during data transfer
3	MODE button: Click to start DHCP mode	3	Mode button: Click to switch Graph/Video display mode and the output will have a corresponding display alert
4	RST keys: Press and hold to restore factory settings	4	RST keys: Press and hold to restore factory settings
5	USB port: Computer USB input	5	K/M port: Key mouse input
6	HD output port: HDMI display for connecting displays	6	K/M port: Key mouse input
7	HD input port: Connect to your device (computer host, notebook, or box)	7	HD output port: HDMI display for connecting displays
8	AUDIO IN: Audio input	8	AUDIO OUT: Audio output
9	FIBER: Fiber output	9	FIBER: Fiber input
10	DC 12V port: 12/1A power input is required	10	DC 12V port: 12/1A power input is required

6.Diagram

1. extender (1 to 1)



2. the allocation extender (1 to N)



7.Warranty

Thank you very much for using our products.

The warranty time is one year and life-long maintenance. During this period, any belongs to under normal usage circumstance cause because of the product quality's problem of breakdown, our company will be responsible for giving free maintain.

▲ Safety instruction

- 1.The malfunction and damaged caused by incorrect use, t he unauthorized repairs and alteration;.
- 2.The damage caused by fire, flood, abnormal voltage, other natural disasters and secondary product damage;.
- 3.The product malfunction caused by not in accordance with the user manual operation;
- 4.The malfunction and damaged caused by the other barriers (man-made factors or external device).

If you need after-sales service, please contact us directly, and provide complete warranty card and purchase note.

www.pwaytek.com

Shenzhen Pinwei Technology Co.,Ltd.

Tel: +86(0)755 83240274

Official Website:www.pwaytek.com

Address: 6/Floor, No.21, Tianxi Road, Longhua District, Shenzhen, Guangdong, China. ZIP:51